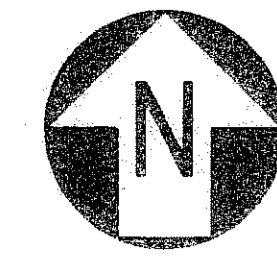
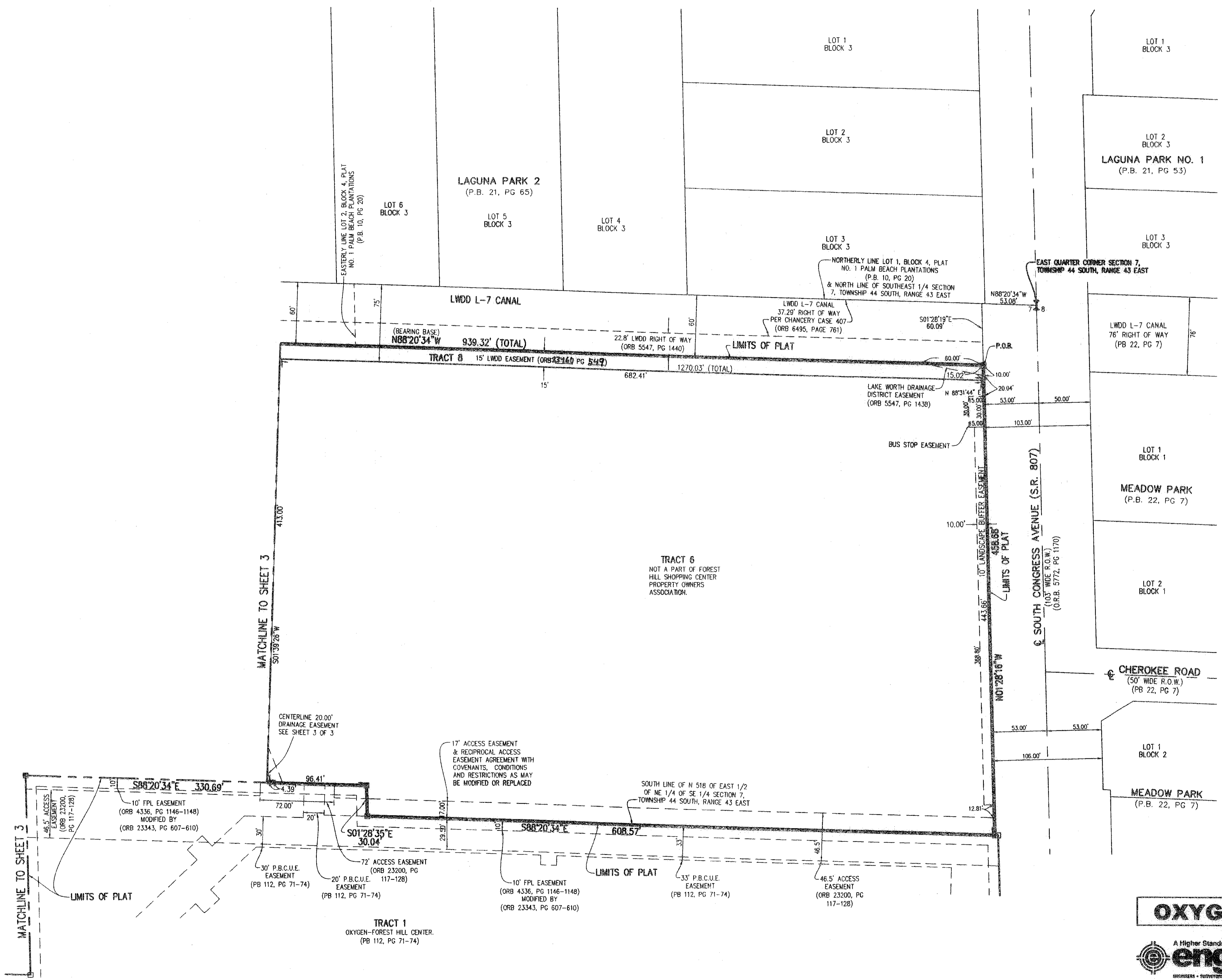
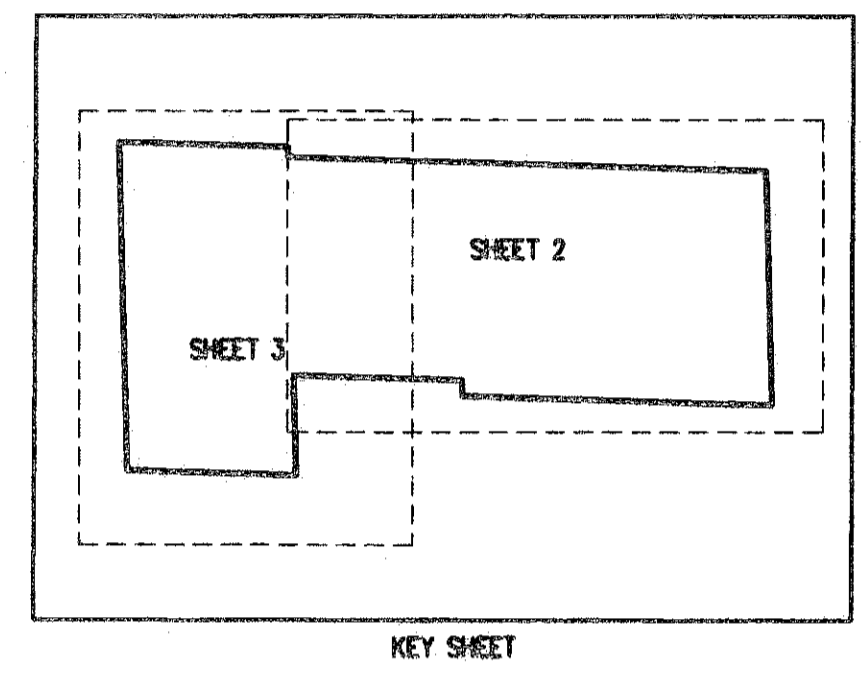
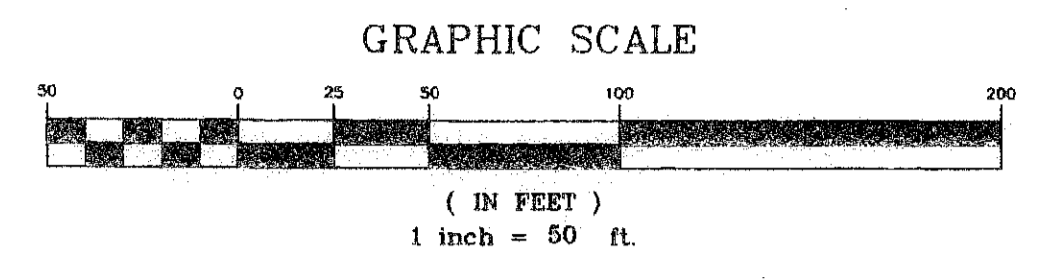


# OXYGEN DEVELOPMENT RE-PLAT

BEING A REPLAT OF A PORTION OF OXYGEN-FOREST HILL CENTER AS RECORDED IN  
 PLAT BOOK 112, PAGES 71-74, AND LYING IN SECTION 7, TOWNSHIP 44 SOUTH, RANGE 43 EAST  
 VILLAGE OF PALM SPRINGS, PALM BEACH COUNTY, FLORIDA  
 SHEET 2 OF 3      SEPTEMBER 2009



180



- LEGEND**
- R RADIUS
  - L ARC LENGTH
  - Δ DELTA ANGLE
  - (M) MEASURED
  - O.R.B. OFFICIAL RECORD BOOK
  - L.A.E. LIMITED ACCESS EASEMENT
  - R.O.W. RIGHT-OF-WAY
  - C.B. CHORD BEARING
  - P.R.C. POINT OF REVERSE CURVATURE
  - P.B. PLAT BOOK
  - P.G. PAGE
  - P.B.C.U.E. PALM BEACH COUNTY UTILITY EASEMENT
  - D.E. DRAINAGE EASEMENT
  - ⊙ CENTER LINE
  - ◻ EXISTING PERMANENT REFERENCE MONUMENT LB#6603
  - SET PERMANENT REFERENCE MONUMENT LB#6603
  - N.R. NON-RADIAL
  - LWDD LAKE WORTH ORANGE DISTRICT

## OXYGEN DEVELOPMENT RE-PLAT

A Higher Standard of Excellence  
**engenuity inc.**  
ENGINEERS • SURVEYORS • GIS MAPPING

DATE	SEPT. 2009
SCALE	1" = 50'
CAD FILE	7045.01
DRAWN	ATGIII
CHECKED	

SHEET  
**2/3**  
 JOB NO.  
**7045.01**

1201 BELVEDERE ROAD, WEST PALM BEACH, FLORIDA 33405  
 PH (561)655-1151 • FAX (561)832-9390  
 WWW.ENGENUITYGROUP.COM

J:\Lund Projects R2\7045.01\dwg\7045.01 OX Plat SEPT. 2009 SUBMITTAL.DWG 9/4/2009 3:51:42 PM EDT